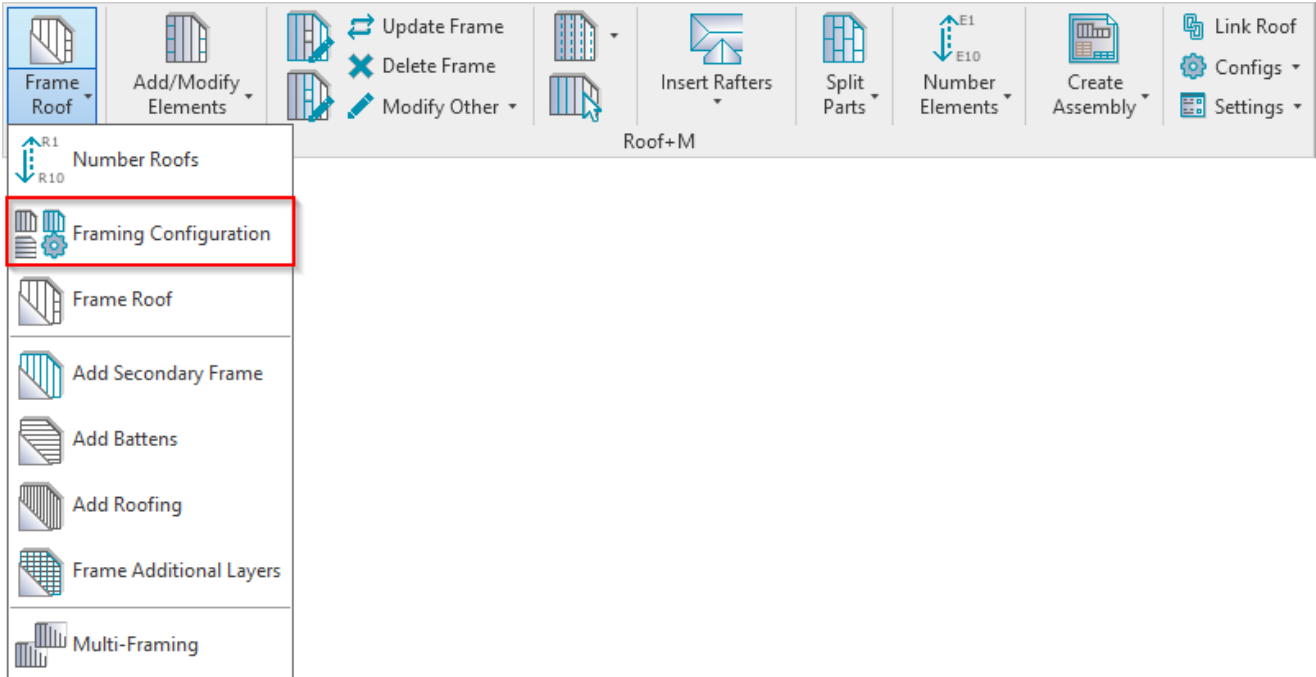


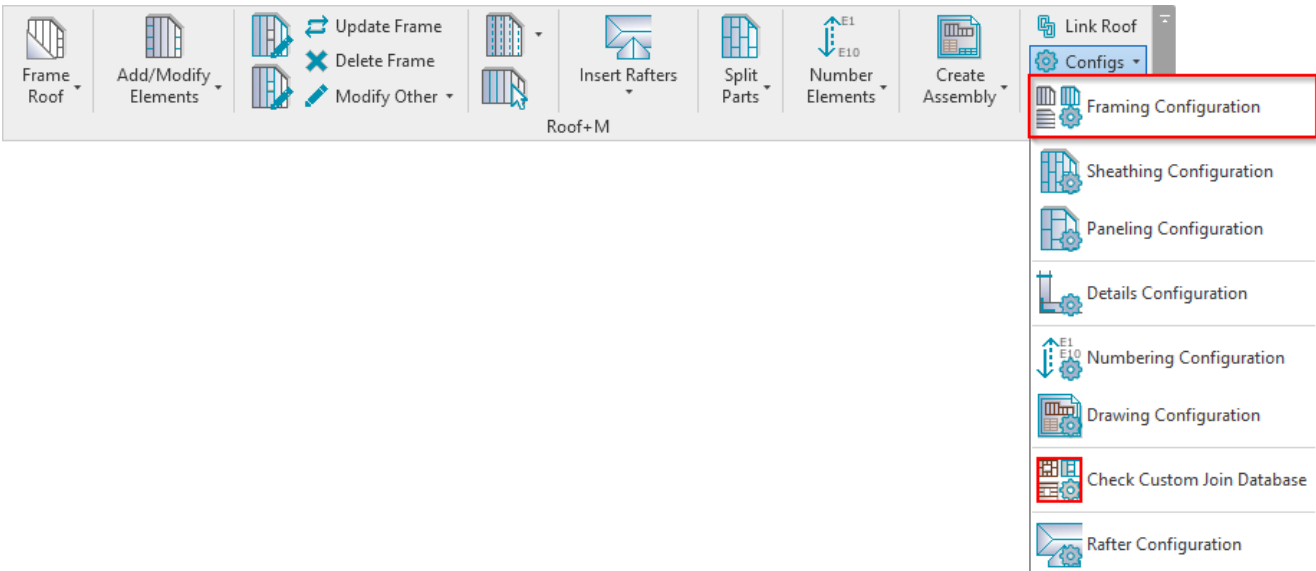
# FRAMING CONFIGURATION – Dialog

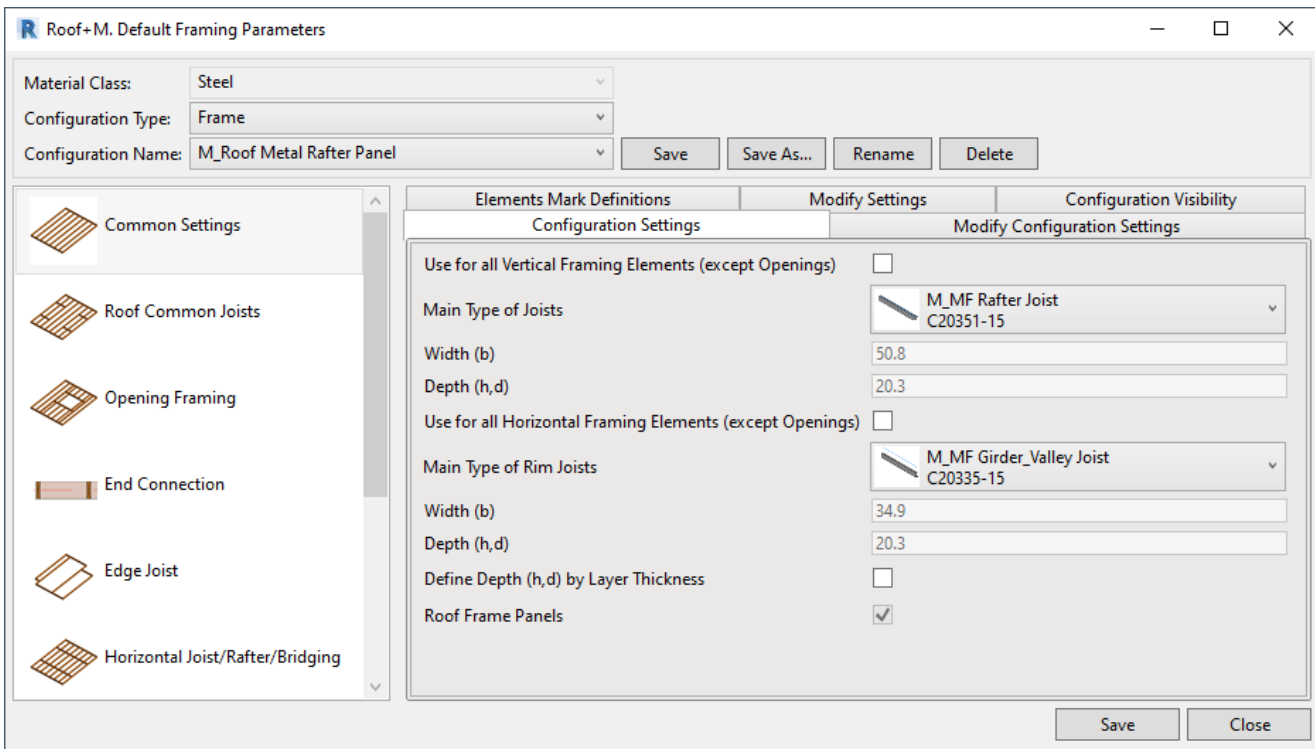
Modified on: Sat, 9 Jan, 2021 at 7:37 PM

## Framing Configuration Dialog



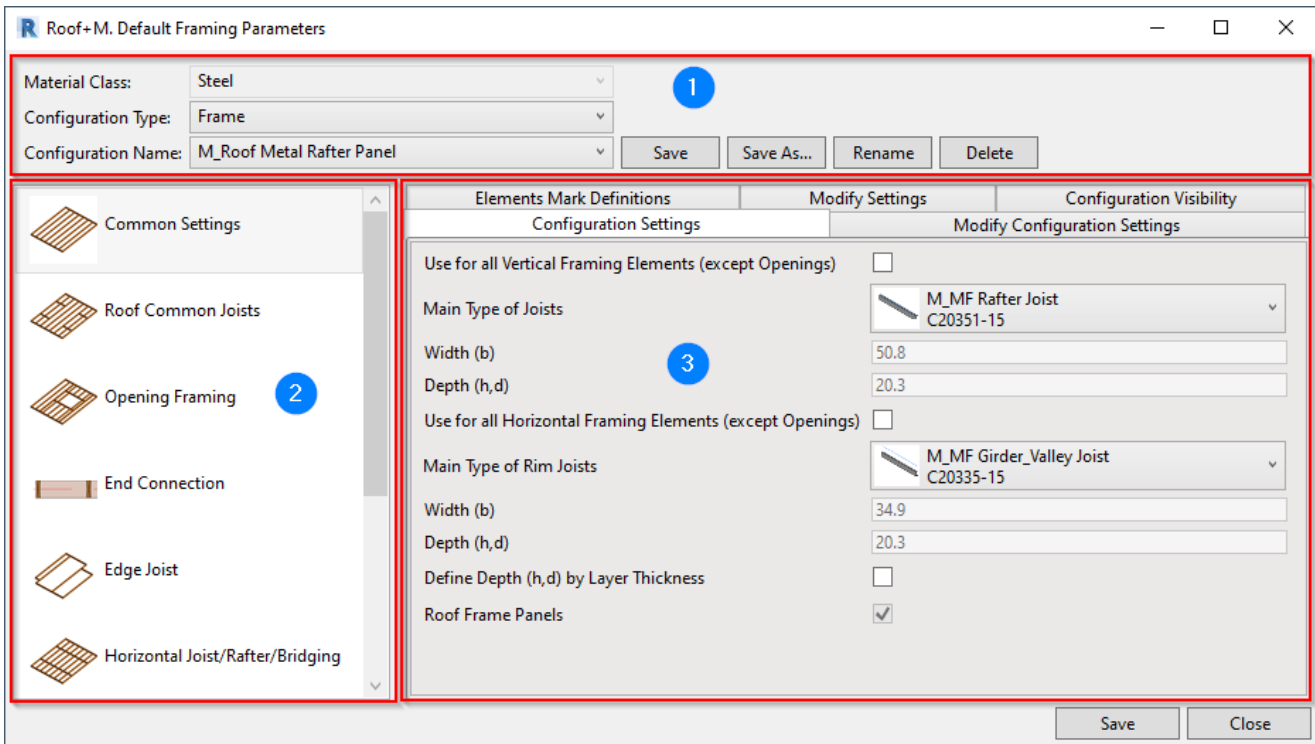
OR:





**Framing Configuration** – defines all framing settings. It allows user to configure and save settings for all sorts of frames – **Main Roof Frame**, **Secondary Frames**, **Battens**, **Roofing**. It is very a versatile tool with thousands of possibilities.

## Main Divisions



The **Framing Configuration** dialog is divided into three main parts: **Top (1)**, **Left (2)**, and **Right (3)**.

In the Top part, choose the **Configuration Type** that you want to use and **Configuration Name** that you want to modify.

The Left part lets you select the framing type going in an easy top-to-bottom direction. In the Right part are the settings.

**Material Class** – defines material. **Wood Framing Roof+** (<http://www.aga-cad.com/products/bim-solutions/wood-framing-roof-panel-frame>), uses Wood and **Metal Framing Roof+** (<http://www.aga-cad.com/products/bim-solutions/metal-framing-roof-panel-frame>), uses Metal/Steel.

Material Class:	Steel
-----------------	-------