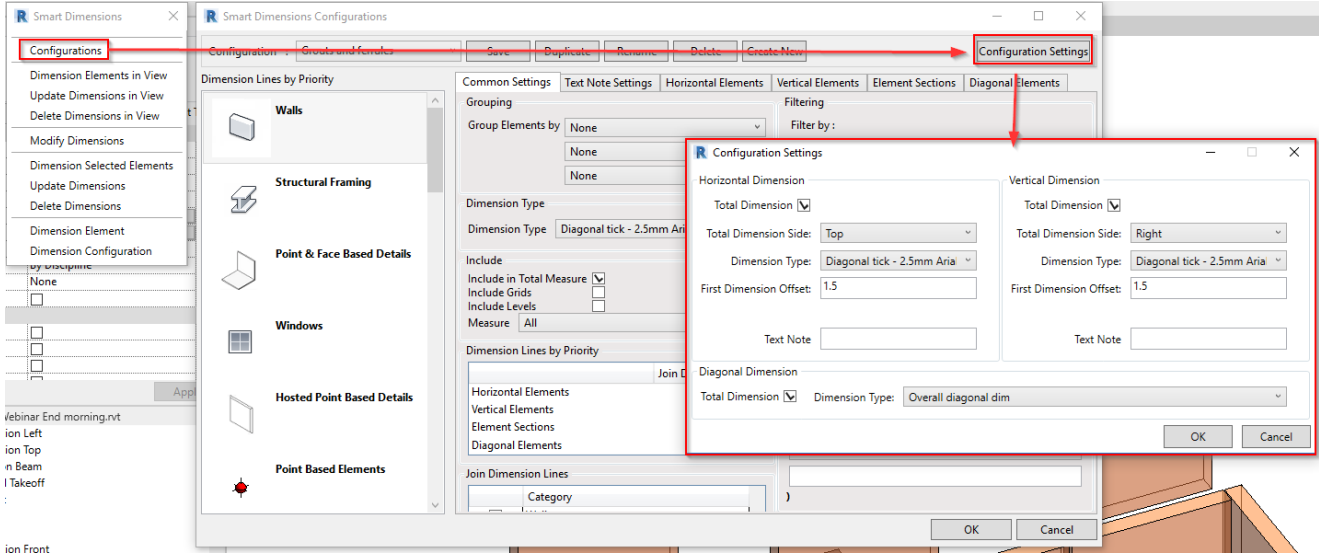


Smart Dimensions - Config Settings - Total Dimension

Modified on: Fri, 30 Apr, 2021 at 3:01 PM

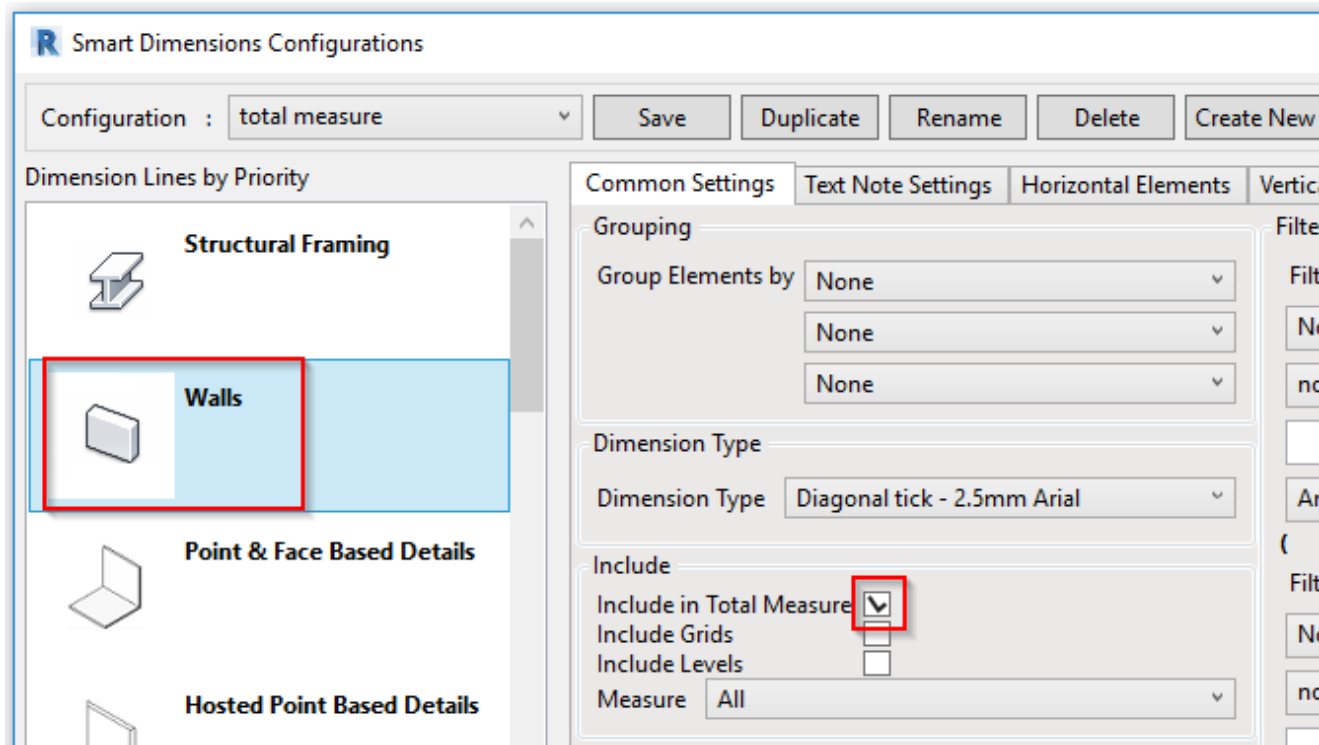
Total measure settings can be found in the Configurations window of Smart Dimensions:

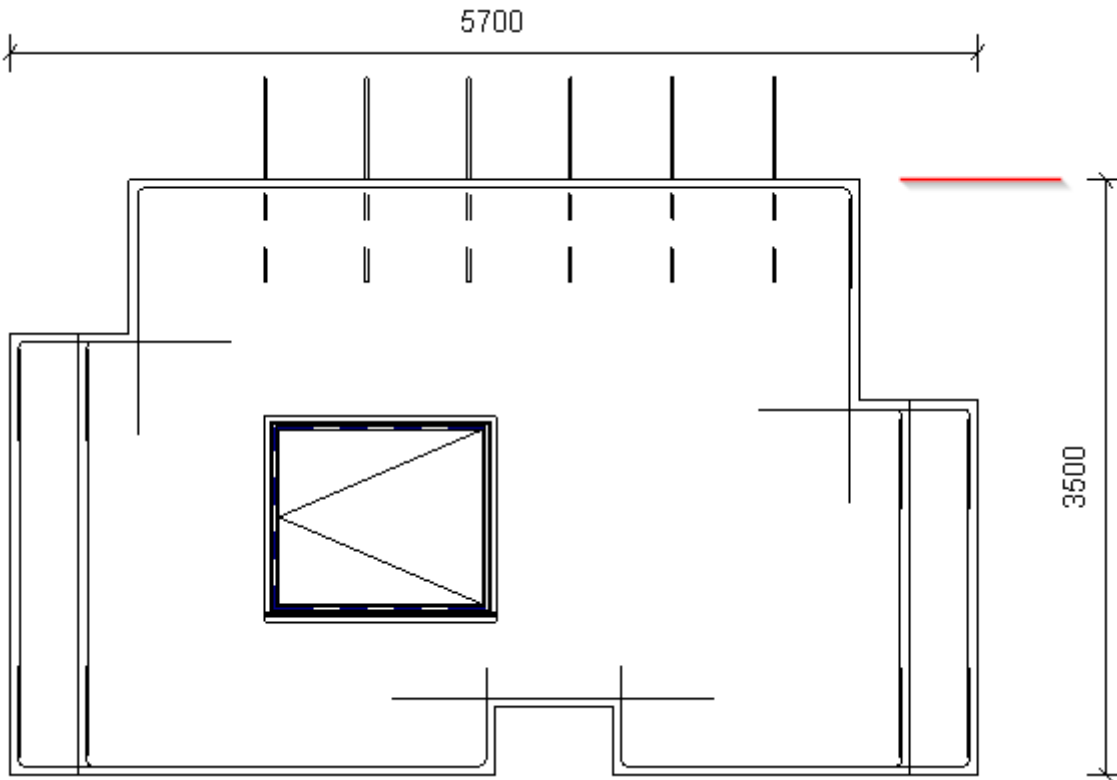


There are settings for Horizontal, Vertical, and Diagonal total dimensions. You can switch any of them ON or OFF.

Horizontal and **Vertical Total Dimension** setting will give the overall dimension of all elements that have been selected to be **Included in Total Measure**.

Example. Only Walls have been selected to be included in the total measure:





Now, if Face-based details are also selected to be **Included in Total Measure**, then the vertical dimension will include them as well:

R Smart Dimensions Configurations

Configuration : total measure [Save] [Duplicate] [Rename] [Delete] [Create New]

Dimension Lines by Priority

- Structural Framing
- Walls
- Point & Face Based Details**
- Hosted Point Based Details

Dimension 1 | Dimension 2 | Dimension 3

Common Settings | Text Note Settings | On Front Faces | On Vertical Side Faces | On

Grouping

Group Elements by [None] [None] [None]

Dimension Type

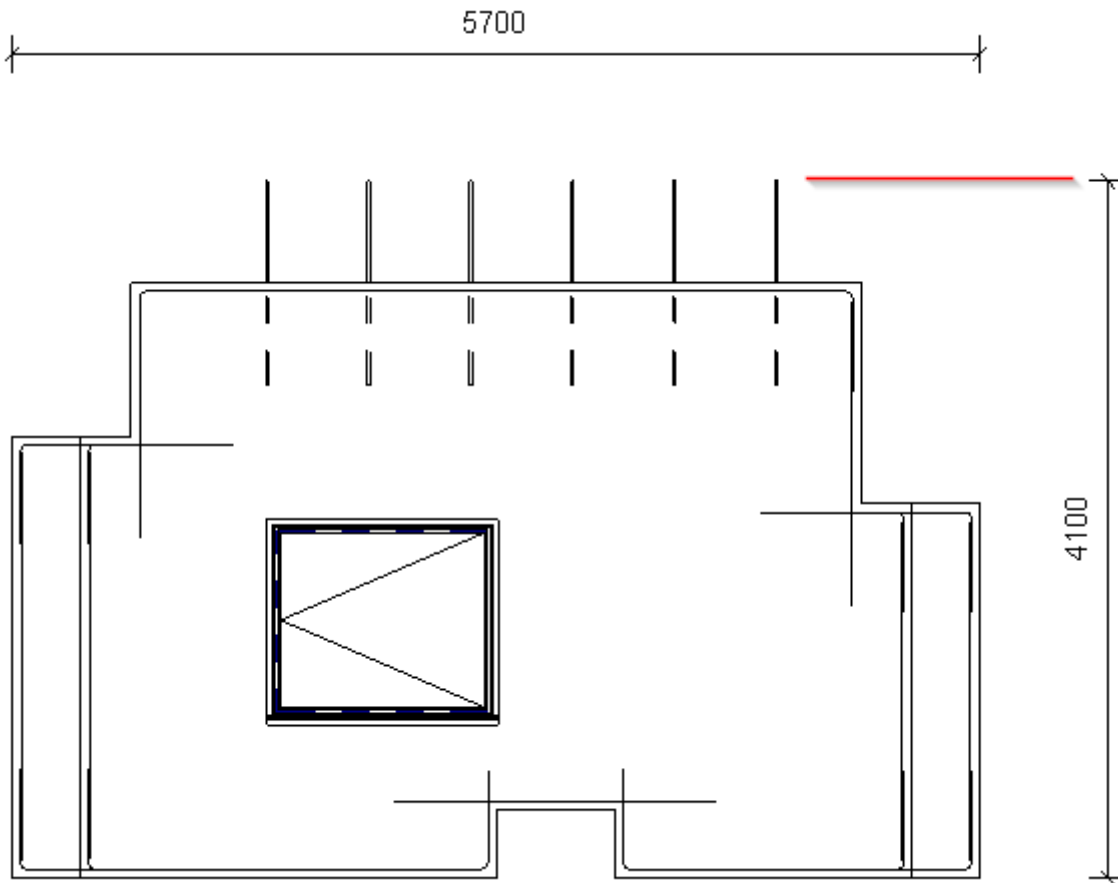
Dimension Type [Diagonal tick - 2.5mm Arial]

Include

Include in Total Measure [v]

Include Grids

Include Levels



You can select a few other options as well.

R Configuration Settings

Horizontal Dimension	Vertical Dimension
Total Dimension <input type="checkbox"/>	Total Dimension <input type="checkbox"/>
Total Dimension Side: <input type="text" value="Top"/>	Total Dimension Side: <input type="text" value="Right"/>
Dimension Type: <input type="text" value="Diagonal tick - 2.5mm Arial"/>	Dimension Type: <input type="text" value="Diagonal tick - 2.5mm Arial"/>
First Dimension Offset: <input type="text" value="1.5"/>	First Dimension Offset: <input type="text" value="1.5"/>
Text Note: <input type="text"/>	Text Note: <input type="text"/>

Diagonal Dimension

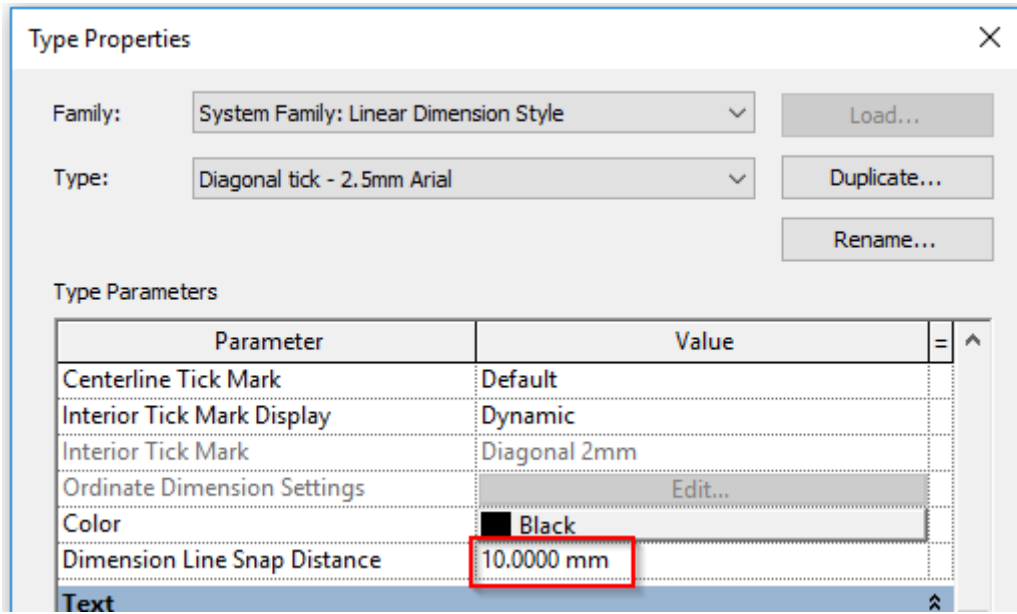
Total Dimension Dimension Type:

OK Cancel

Dimension Side - just select where the dimension line should be placed.

Dimension Type - select from the dimension styles available in the project.

First Dimension Offset - this value will be multiplied by the Dimension Line Snap Distance parameter and used to offset the first dimension line from the measured element.



Text Note - any text may be added here and it will be created near the total dimension line.

Also there is an option for **Diagonal Dimension**. This will place the diagonal dimension for the assembly from bottom left to the top right corner using the selected dimensioning style:

