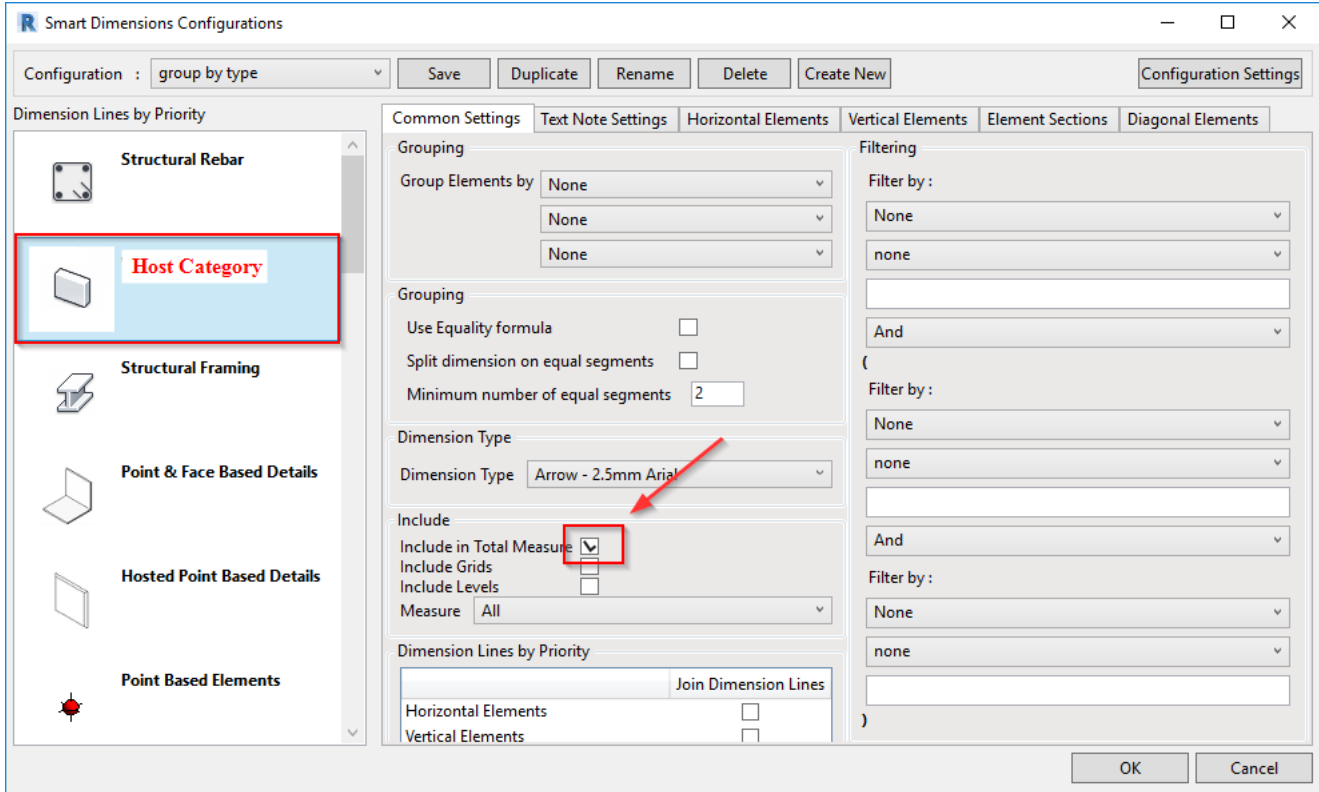


# Smart Dimensions - Structural Rebar

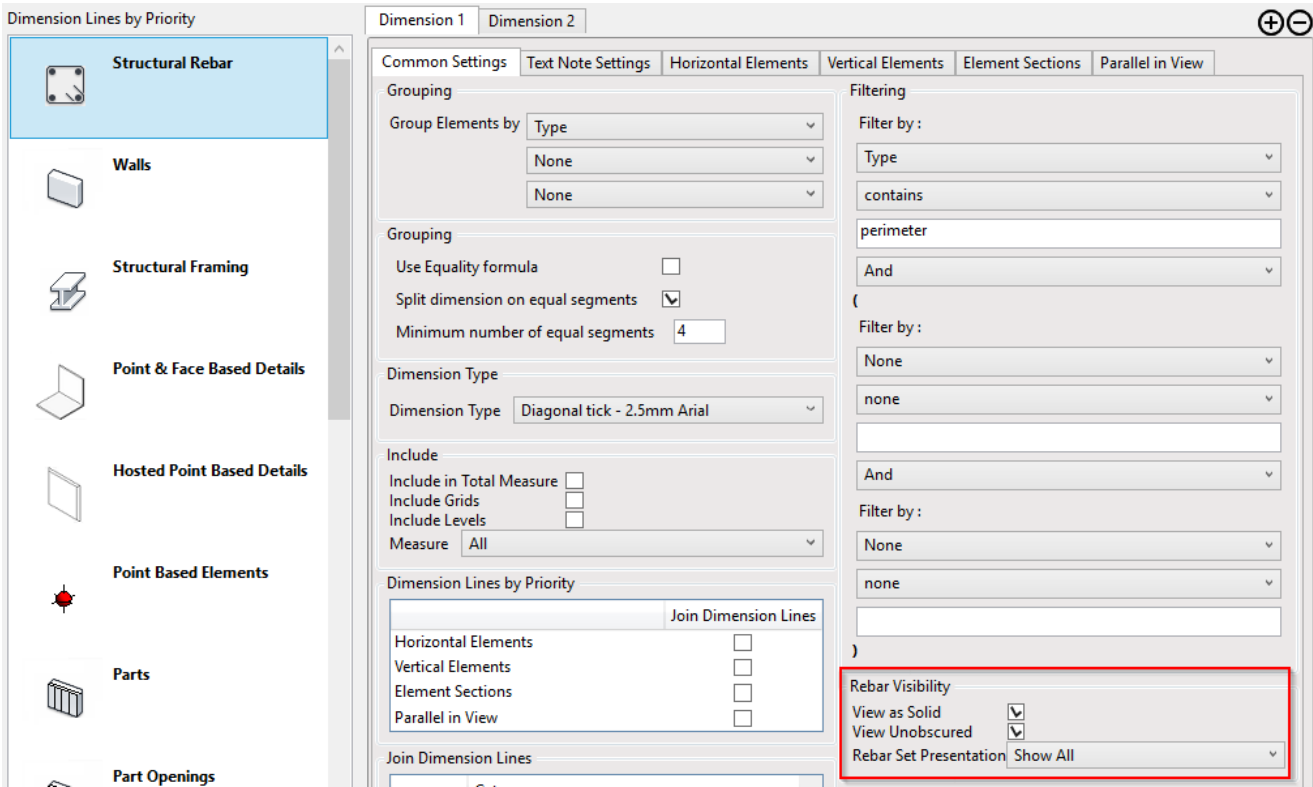
Modified on: Tue, 13 Apr, 2021 at 2:10 PM

To dimension structural rebar, select the Host category (wall, column, beam, etc.) to be included in total measure:



Then, define Structural Rebar dimensioning settings. It's similar to other Categories, but there are a few differences, which are described here.

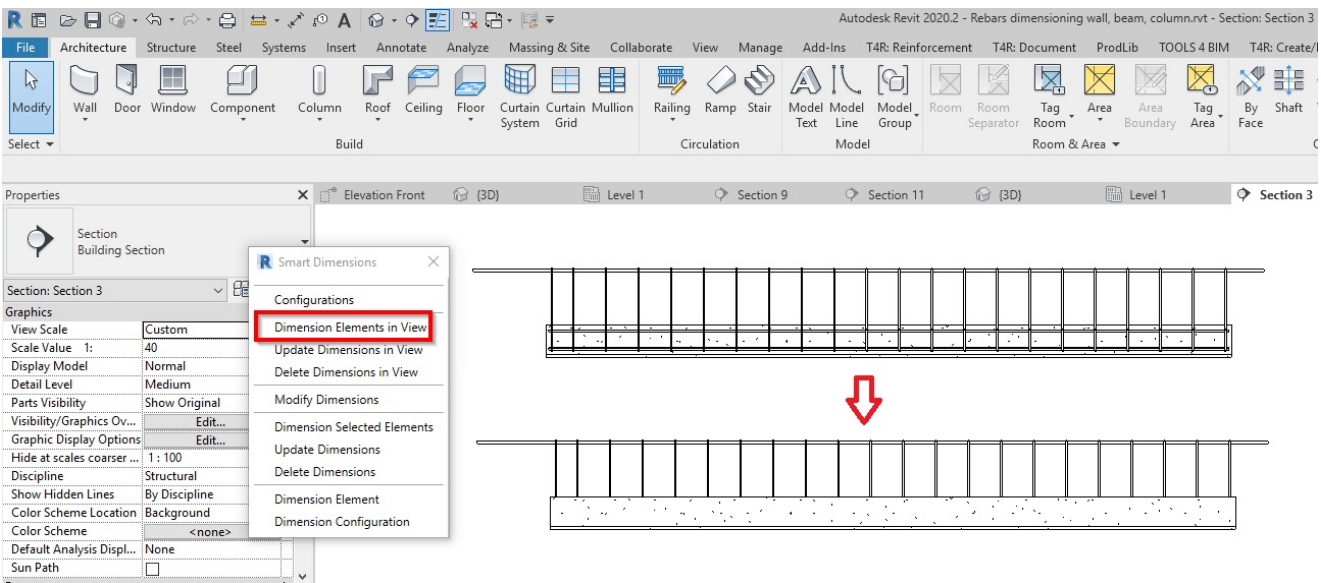
## Common Settings



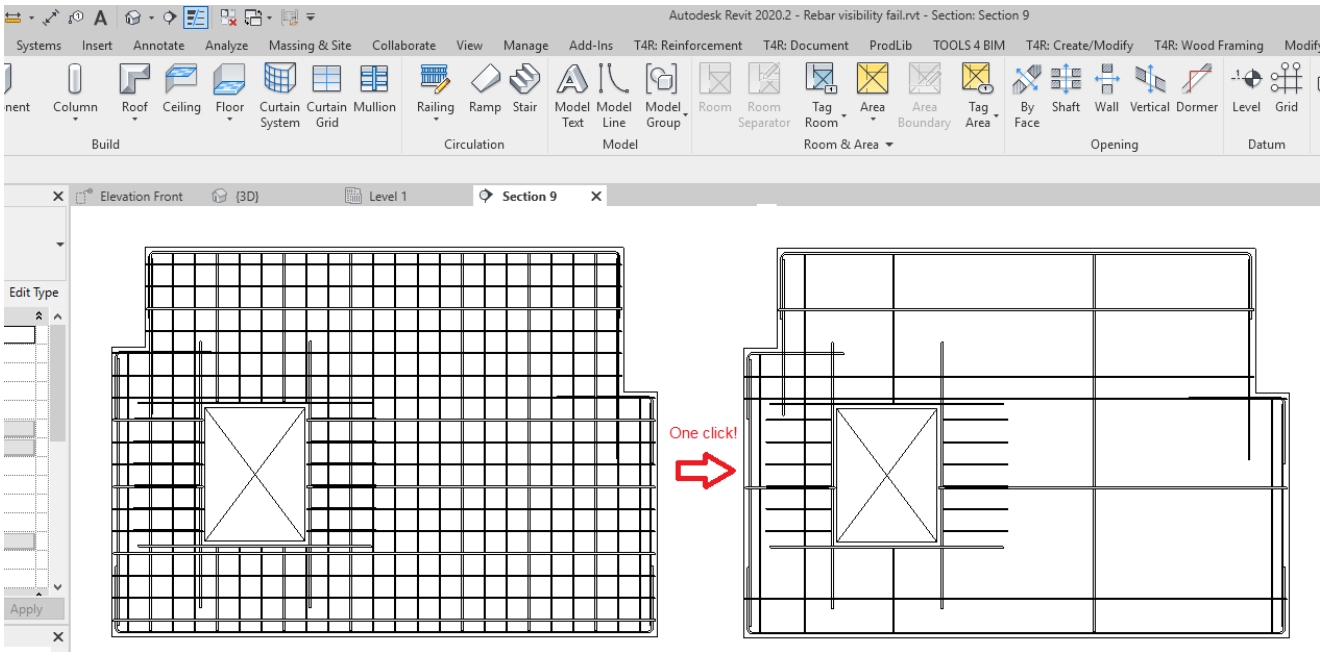
**Rebar visibility** - here you can select options that will be applied on the relevant view while you are using Smart Dimensions alone or with Smart Assemblies.

**View as Solid** - turns ON solid visibility for rebar. Works only in 3D views.

**View Unobscured** - by default this is turned ON in Revit, but sometimes it needs to be switched OFF so that bars inside of an element will not be visible.



**Rebar Set Presentation** - you can select to show middle or first and last bars of rebar sets in the view.

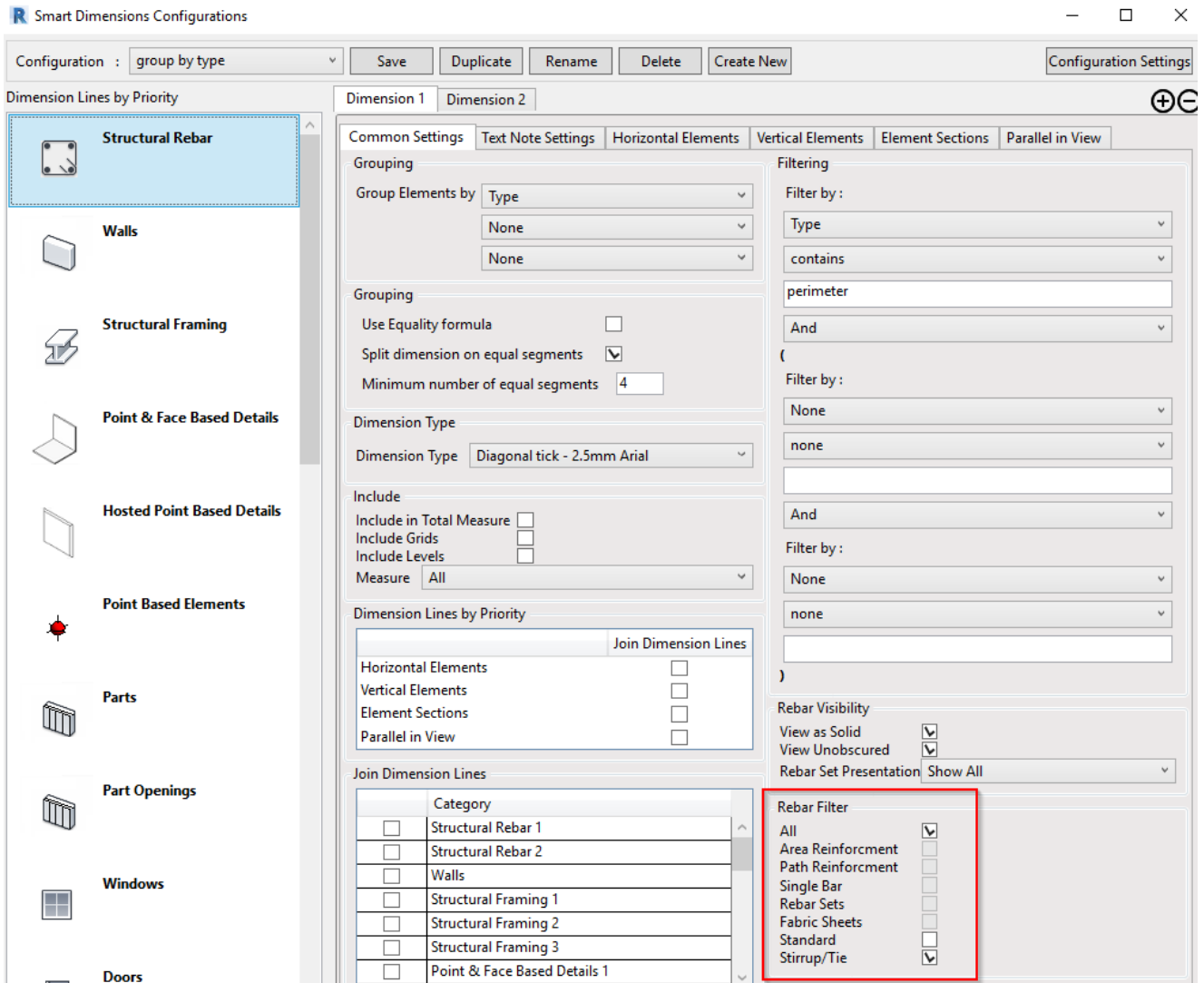


**NOTES:**

These options work even if no dimensioning is selected.

It works with the Filtering options above, so it could be applied only to selected bars. Just check all options that you have in the Dimensioning 1, Dimensioning 2, etc. tabs to make sure settings do not overwrite each other.

**Rebar Filter**



Additional options to quickly filter rebar. These will work with the Filtering options above.

**All** - Dimensioning 1 settings will be applied to all rebar visible in the view (if Filtering options don't dictate otherwise)

**Area reinforcement** - only bars created with Area reinforcement will be dimensioned

**Path reinforcement** - only bars created with Path reinforcement will be dimensioned

**Single Bar** - only bars created as singles will be dimensioned

**Rebar sets** - only Rebar sets will be dimensioned

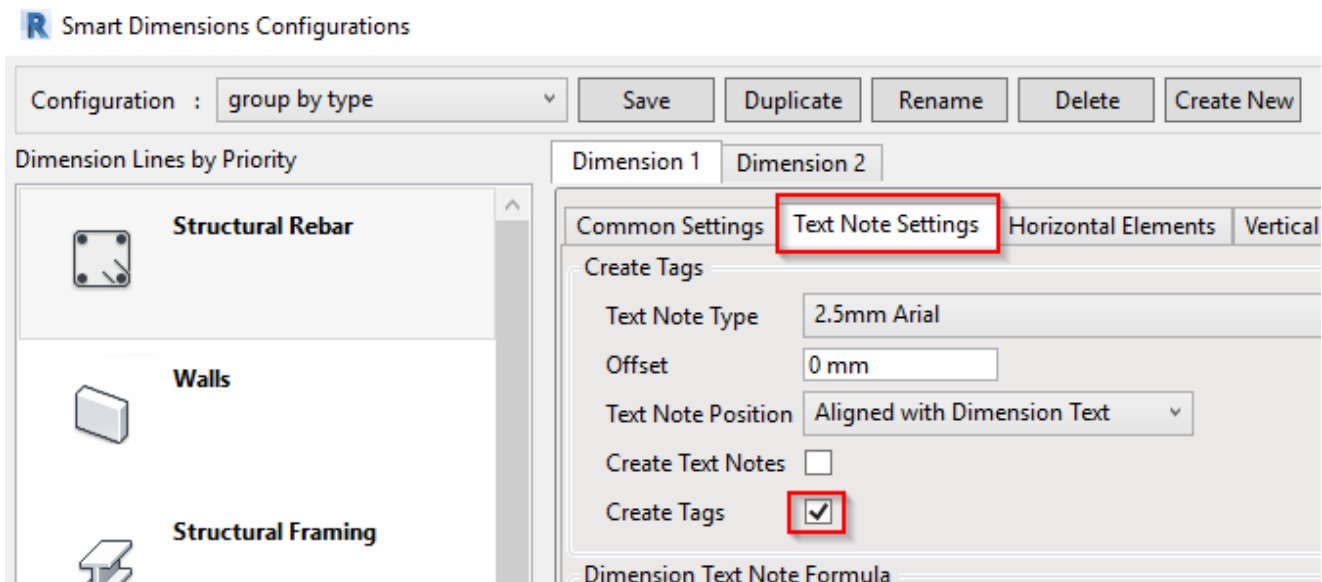
**Fabric sheets** - only Fabric sheets will be dimensioned. *(As of 2021 04 13, this option does not yet work, as settings for Fabric sheet dimensioning are still in development.)*

**Standard** or **Stirrup/Tie** options let you quickly access filtering by Rebar style.

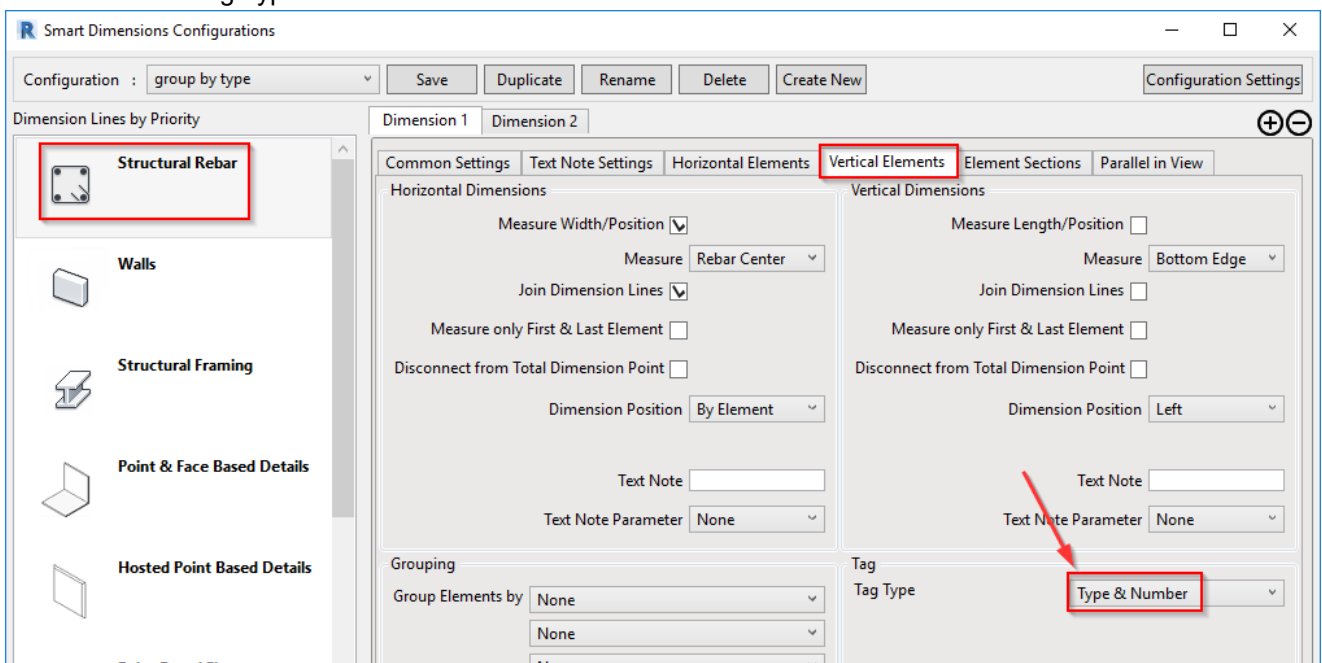
## Text Notes/Tags

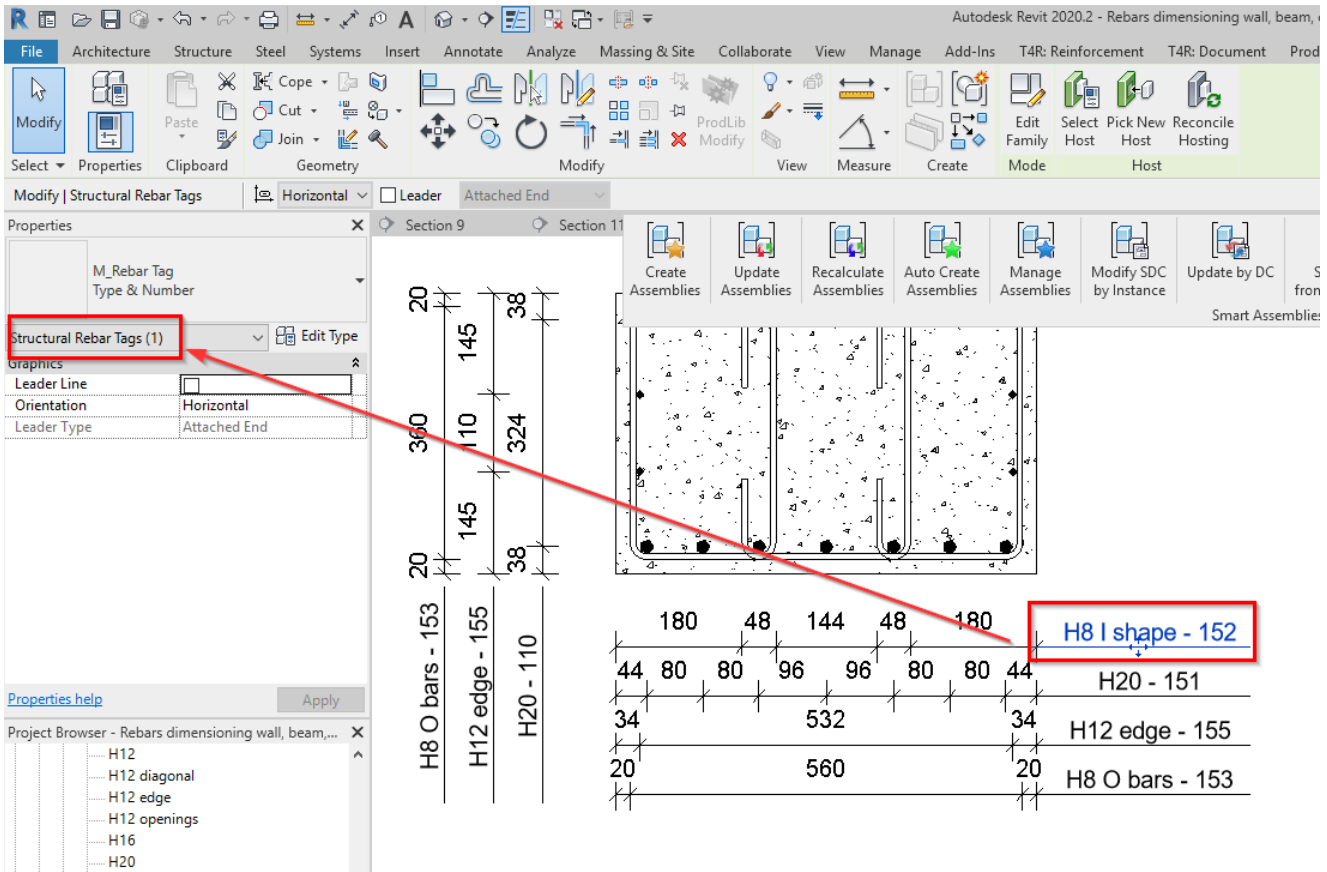
You can use Text Notes as for all the other Categories in Smart Dimensions, as well as Rebar tags.

To use Tags, choose this in the Text Note tab:



And in the Horizontal Elements, Vertical Elements, Element Sections, and Parallel in View tabs, you will find an option to select Rebar Tag Type:

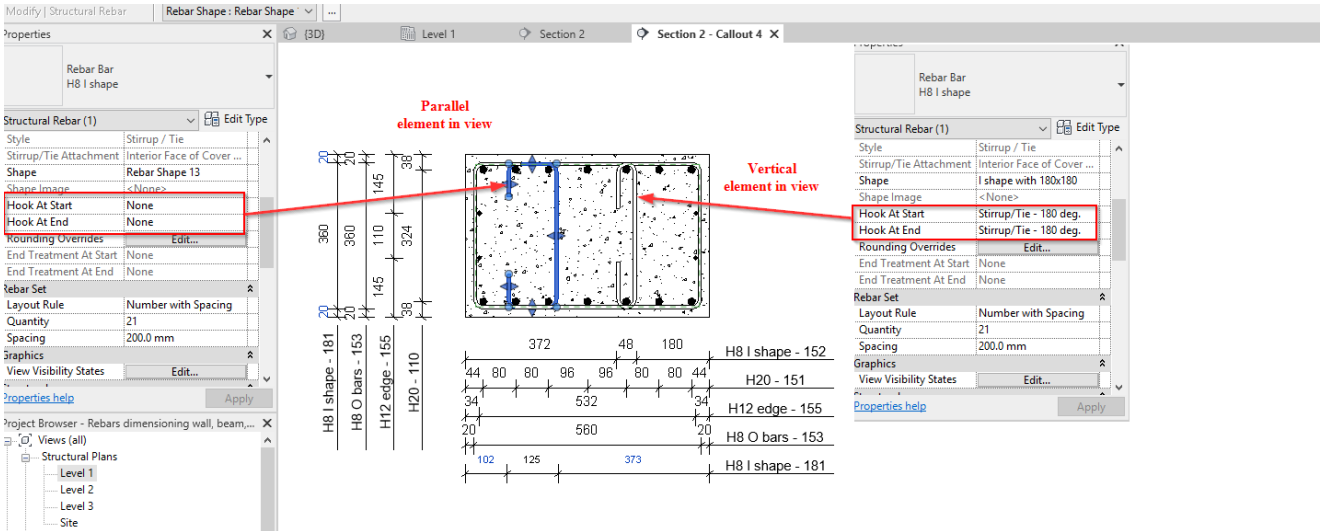




**Vertical / Horizontal Elements in view**

Bars with hooks are treated as vertical or horizontal.

If it's sketched as bending or hooks, then it will fall into the Parallel in View dimensioning tab.



**Element Sections** - if we see the end of the bar, then it could be a section or an elevation view, but we're referring here to the circle that you see on-end.

**Parallel in View** - bars sketched parallel to the view plane

The screenshot displays the Autodesk Revit 2020.2 interface with the Smart Dimensions tool active. The ribbon includes tabs for File, Architecture, Structure, Steel, Systems, Insert, Annotate, Analyze, Massing & Site, Collaborate, View, Manage, Add-Ins, T4R: Reinforcement, and T4R: Document. The Properties panel on the left shows settings for 'Section Building Section' and 'Section 2 - Callout 4'. The Project Browser on the left shows a tree view of 'Structural Plans' including Level 1, Level 2, Level 3, Site, and 3D Views.

The main view area shows three structural rebar views with dimension lines and values. Red arrows point to specific dimension elements with the following labels:

- Elements in Sections**: Points to horizontal dimension lines at the top of the views.
- Parallel in View dimension tab for stirrups**: Points to a vertical dimension line on the left side of the views.
- Vertical elements**: Points to vertical dimension lines on the right side of the views.

The Smart Dimensions tool window is open, showing the following menu items:

- Configurations
- Dimension Elements in View
- Update Dimensions in View
- Delete Dimensions in View
- Modify Dimensions
- Dimension Selected Elements
- Update Dimensions
- Delete Dimensions
- Dimension Element
- Dimension Configuration