

Dato :	20.11.05	Sign: tb
Sist rev:	24.9.07	Sign: tb
Doc. Nr:	K4-12E	Sign: tb
Side 1 av 4		

Production BCC



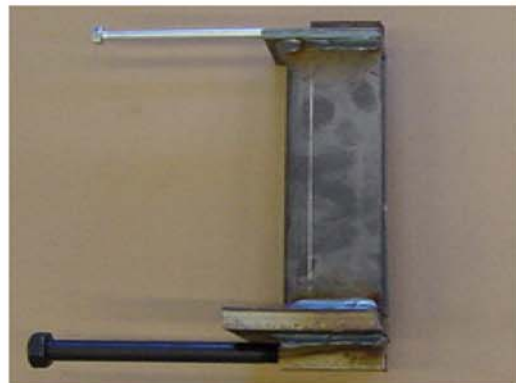
P1. 2 types of BCC unit. BCC 250 and BCC 450



P2. Adjustable jig for two- sided column unit.



P3. Double column unit, with the threaded bar.



P4. Single column unit with bolts as reinforcement



P5. Instead of the threaded bar, one can use welded reinforcement bars.



P6. Placing of the guiding unit for the column unit.

Dato :	20.11.05	Sign: tb
Sist rev:	24.9.07	Sign: tb
Doc. Nr:	K4-12E	Sign: tb
Side 2 av 4		

Production BCC



P7. The guiding unit is fasten with two-sided tape or one can use "Uretan Metall", which is an fast drying glue.



P8. Two- sided column unit placed on the guiding unit.



P9. Reinforcement of the column.



P10. The column is ready to be cast.



P11.The column unit is embedded in the column.



P12. The column unit is embedded in the column

Dato :	20.11.05	Sign: tb
Sist rev:	24.9.07	Sign: tb
Doc. Nr:	K4-12E	Sign: tb
Side 3 av 4		

Production BCC



P13. BCC 450 beam unit mounted on the guiding unit.



P14. BCC 450 with 2 - Ø32 mm reinforcement bars .



P15. Mounting the threaded bars.



P16. BCC 450 is placed inside the reinforcement cage.



P17. Completed reinforcement with the BCC unit inside, is lifted to the casting mould.



P18. Mounting of the plastic tube.

Dato :	20.11.05	Sign: tb
Sist rev:	24.9.07	Sign: tb
Doc. Nr:	K4-12E	Sign: tb
Side 4 av 4		

Production BCC



P19. Finished beam , with BCC 450 .



P20. Inserting the safety rope in the plastic pipe.



P21. The safety rope is coming out in the front of the beam.



P22. Attach the rope to the knife, and push the knife inside the unit.



P23. Pull on the safety rope, until it's tight. Then tie a knot to the plastic tube.



P24. Beam with the knife inside, ready for transport.