

The logo for ZWCAD, featuring the letters 'ZWCAD' in a bold, white, sans-serif font. A small green leaf-like shape is positioned above the letter 'C'.

ZWCAD

Quick Start Guide

ZWSOFT CO., LTD. (Guangzhou)

Add : Room 01-08, 32/F, Pearl River Tower, No.15, Zhujiang West Road,
Tianhe District, Guangzhou, 510623, China

Tel : +(86) 20-38289780 Fax : +(86) 20-38288676

Email : sales@zsoft.com

| | |
|--|----|
| System Requirements | 2 |
| How to Install | 3 |
| How to Activate | 4 |
| I. With a Soft-Key License | 6 |
| I.I Stand-alone | 7 |
| I.II Network | 8 |
| I.II.I Install Network License | 10 |
| I.II.II Activate Network License | 11 |
| I.II.III Configure Network License | 13 |
| I.II.IV Floating and Borrowed License | 15 |
| II. With a Dongle License | 19 |
| How to Transfer Your License | 21 |
| I. Deactivation - ZWCAD | 22 |
| II. Deactivation - Network License Manager | 23 |
| Learn More | 25 |

| | Minimum System Requirements | Recommended System Requirements |
|-------------------------|--|--|
| Operating System | Microsoft® Windows XP SP3 and above Microsoft® Windows Server 2003 Microsoft® Windows Server 2008 Microsoft® Windows Server 2016 Microsoft® Windows Vista Microsoft® Windows 7 Microsoft® Windows 8 Microsoft® Windows 10 | Microsoft® Windows XP SP3 and above Microsoft® Windows Server 2003 Microsoft® Windows Server 2008 Microsoft® Windows Server 2016 Microsoft® Windows Vista Microsoft® Windows 7 Microsoft® Windows 8 Microsoft® Windows 10 |
| Processor | Intel® Pentium™ 4 1.5 GHz or equivalent AMD® processor | Intel® Core™ 2 Duo or AMD® Athlon™ X2 CPU or higher |
| RAM | 1 GB | 2 GB or more |
| Graphics Card | 128 M | 1 GB or more |
| Hard Disk | 2 GB free space in OS disk, 1 GB free space in installation disk | 4 GB free space in OS disk, 2 GB free space in installation disk |
| Resolution | 1024*768 VGA with True Color | 1440*900 with NVIDIA 8 series or Radeon HD series or higher |
| Pointing Device | Mouse, trackball, or other devices | Mouse, trackball, or other devices |
| DVD-ROM | Any speed (for installation only) | Any speed (for installation only) |

Note: Network License Manager does not support Windows XP, Vista and Windows Server 2003.



STEP 1
Choose 32 bit or 64 bit version that fits your operation system.



STEP 2
Check **ZWCAD 2019**, then click [Install] to execute installation.



STEP 3
Click [Finish] to complete the installation and launch ZWCAD.

There are 2 ways to activate ZWCAD.

①

XXXX-XXXX-XXXX-XXXX-XXXX-XXXX

Soft-Key Activation

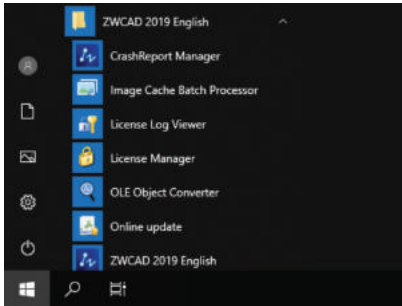
A 24-character license code is used to activate.

②



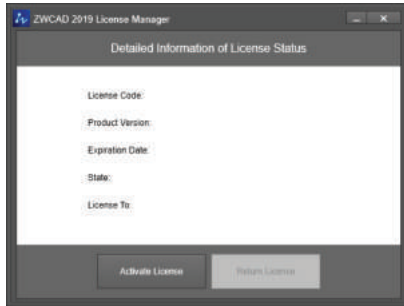
Dongle Activation

A dongle and an 8-character license code are used to activate.



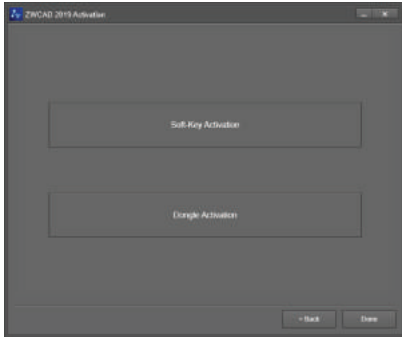
STEP 1

Launch **License Manager** from the Windows Start Menu.



STEP 2

Click [Activate License].



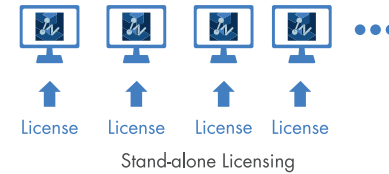
STEP 3

- > Choose the activation method you use.
- > For Soft Key user, please refer to Page 6 - 18;
- > For Dongle user, please refer to Page 19 - 20.

There are 2 licensing options for Soft Key license.

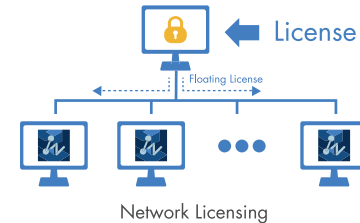
Stand-alone (Page 7)

You need to activate each computer with an individual license.

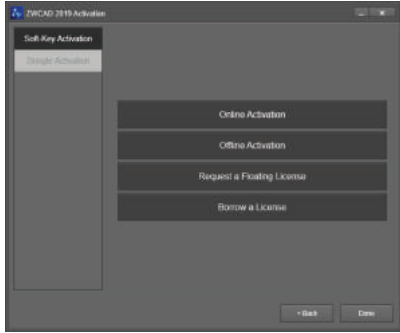


Network (Page 8 - 14)

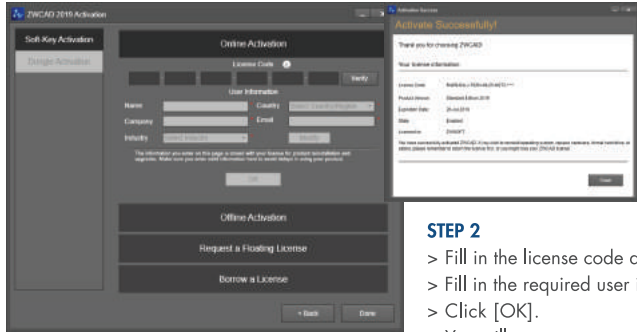
You need to activate the license on a server first, then come back to the client side to obtain a license from the server via a network connection.



I.I Stand-alone License



STEP 1
Click [Online Activation].



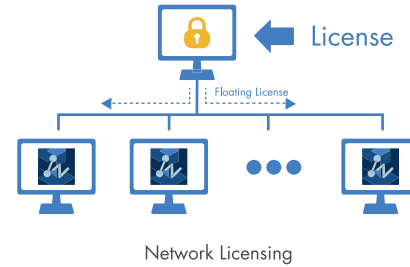
STEP 2

- > Fill in the license code and click [Verify].
- > Fill in the required user information.
- > Click [OK].
- > You will see a success page with your license information.



The activation should be processed with Internet access. If the Internet access is limited, please choose Offline Activation and follow the guide to activate.

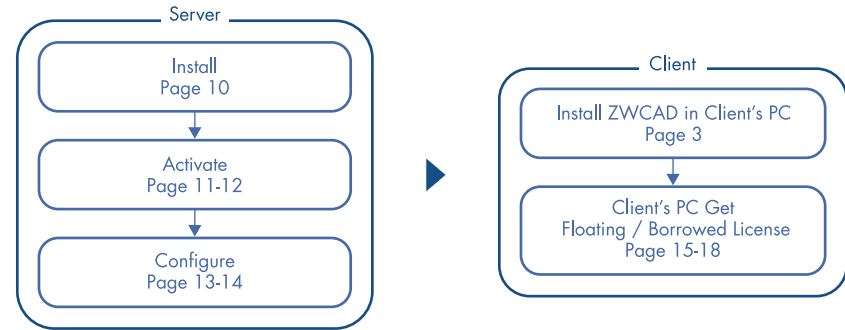
I.II Network License



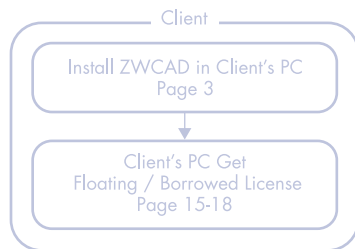
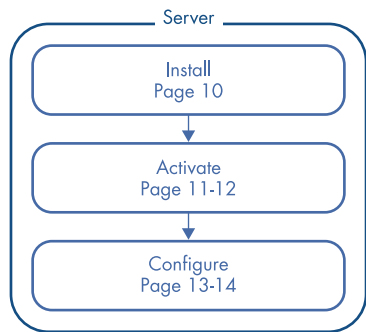
Network License means the clients get their licenses from a network server that is authorized with a ZWCAD Network License. A Network License is ideal for medium to large organizations with many users. Admin can manage licenses by allowing, limiting or reserving license seats for specific users or groups.

A Network License Manager (NLM) should be installed on the server and both the server and the client need to be configured to enable licensing.

Please refer to the flowchart below.



I.II Network License



I.II.I Install Network License



STEP 1

Choose 32 bit or 64 bit version that fits your operation system.



STEP 2

Check **Network License Manager**, then click [Install].



STEP 3

Click [Finish] when completed.

I.II.II Activate Network License



STEP 1

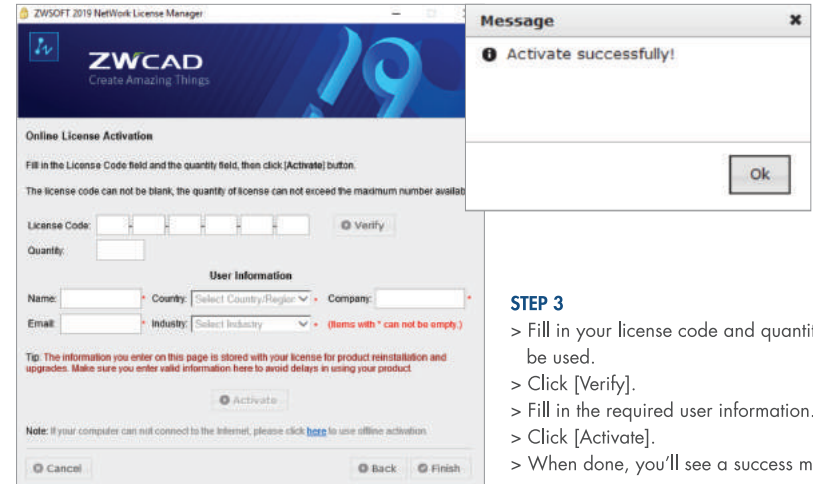
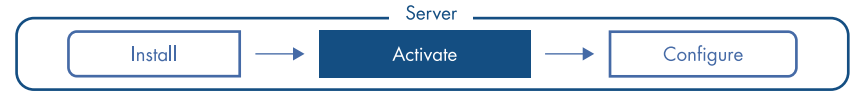
Launch the **Network License Manager** from Windows Start Menu.



STEP 2

Click [Activate].

I.II.II Activate Network License

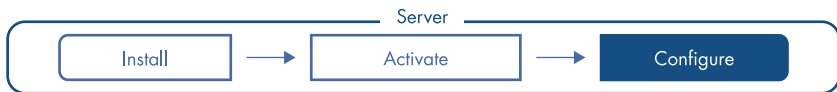


STEP 3

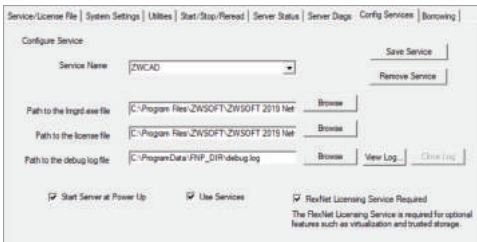
- > Fill in your license code and quantity to be used.
- > Click [Verify].
- > Fill in the required user information.
- > Click [Activate].
- > When done, you'll see a success message.



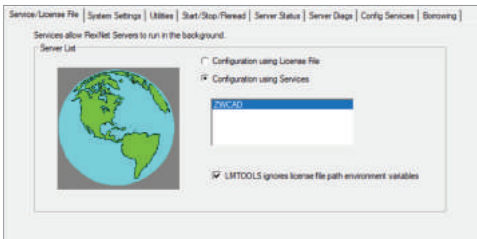
The activation should be processed within Internet access. If the Internet access is limited, please follow the Note at the bottom to go with Offline Activation.



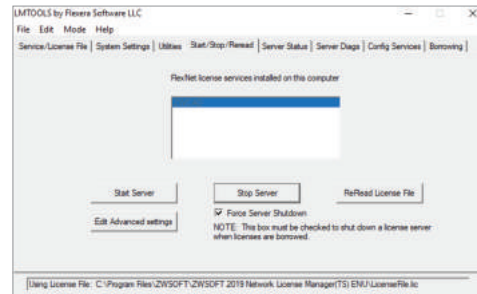
STEP 1
Launch the **Network License Configuration** from Windows Start Menu.



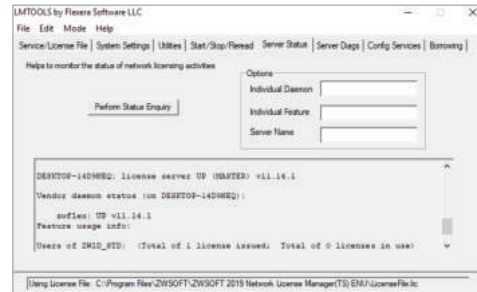
STEP 2
> Go to the tab **Config Services**.
> Click [Save Service].



STEP 3
> Go to the tab **Service/License File**.
> Choose **Configuration using Services**.
> Select the service name.
> Check the option.
LMTTOOLS ignores license file path environment variables.



STEP 4
> Go to the tab **Start/Stop/Reread**.
> Click [Start Server].



STEP 5
> Go to the tab **Server Status**.
> Click [Perform Status Enquiry].
> Check the text box below to confirm the status.
> You will see the total amount of licenses that have been issued.

I.II.IV Floating and Borrowed License

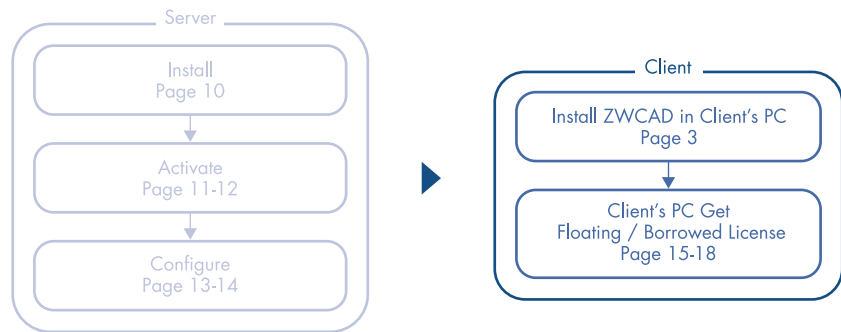
There are 2 ways to obtain license from server, which are Floating and Borrowed. You can choose one of them to activate the ZWCAD on the client side.

Floating:

The client side can obtain a license from the server automatically when they start ZWCAD. The server dynamically allocates a network license, reclaims the license when the product is inactive and re-allocates it. Network connection between clients and server is always required, which is suitable for in-house working.

Borrowed:

The client side can obtain a license from the server manually and store it locally for a specified period of time (maximum 180 days), so that it can still have the authorization when disconnected from the server, which is suitable for outdoor working.



I.II.IV Floating and Borrowed License

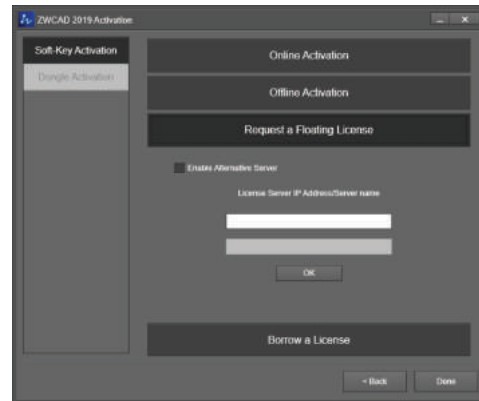


STEP 1

Install ZWCAD according to the installation instruction from Page 3.

STEP 2

Launch the license manager according to the instruction from Page 5 and choose **Soft-Key Activation**.



STEP 3

- > Choose **Request a Floating License**.
- > Fill in the IP address or server name.
- > Click [OK].

I.II.IV Floating and Borrowed License

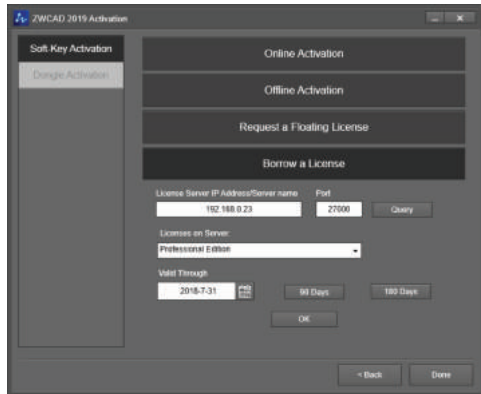


STEP 1

Install ZWCAD according to the installation instruction from Page 3.

STEP 2

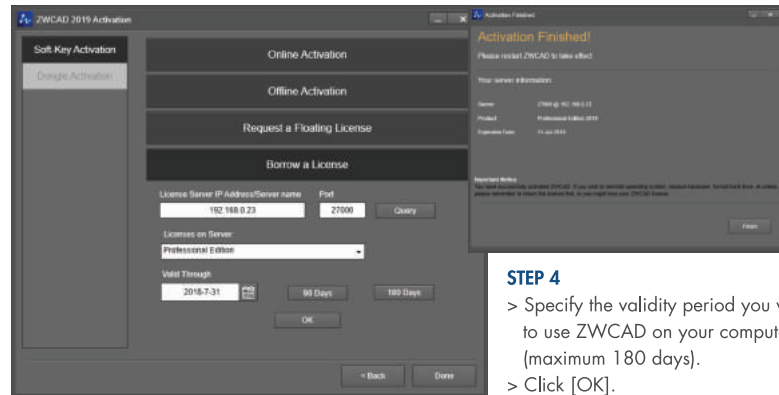
Launch the license manager according to the instruction from Page 5 and choose **Soft-Key Activation**.



STEP 3

- > Choose **Borrow a License**.
- > Fill in the IP address or server name.
- > Click [Query] and choose the version you need from the drop-down list below.

I.II.IV Floating and Borrowed License



STEP 4

- > Specify the validity period you want to use ZWCAD on your computer (maximum 180 days).
- > Click [OK].



Do not change the default Port value 27000, unless it has been specified.

II. With a Dongle License



Dongle only supports stand-alone license.
(No network license available)

The Product ID can be detected in License Manager after inserting the dongle into the computer.

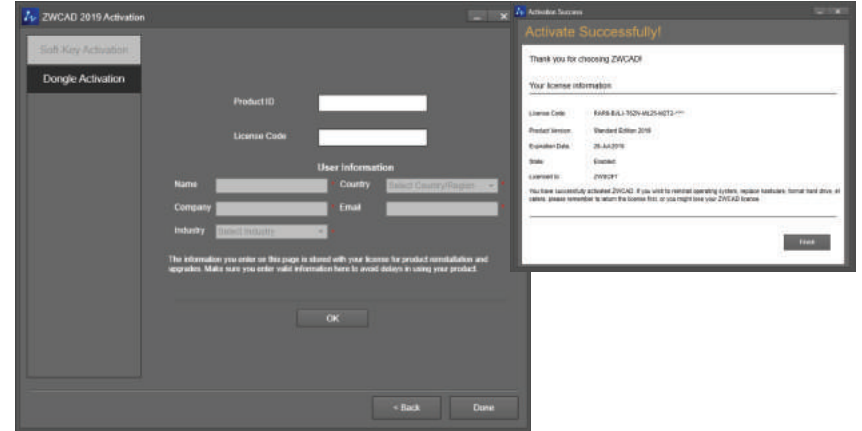
II. With a Dongle License

STEP 1

Plug the dongle into your computer, and wait until the light on the dongle stops blinking.

STEP 2

Follow the introductions from Page 5 and choose [Dongle Activation].



STEP 3

- > Make sure the Product ID is detected and displayed.
- > Input the corresponding license code into the License Code blank.
- > Fill in the required user information.
- > Click [OK].

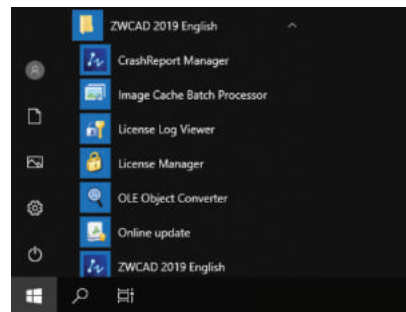
How to Transfer Your License

If you plan to install your current ZWCAD onto another computer or have to do it because of a software or hardware change, e.g. replacing or reformatting a system hard drive, you need to transfer your license(s).



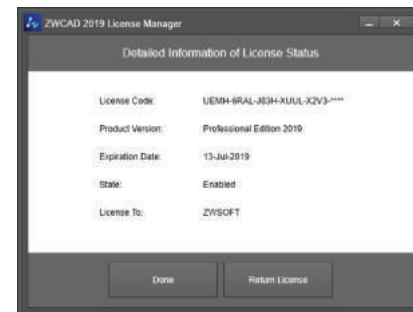
To transfer, you can deactivate your current license on client side, or on server, then activate it again on any new computer.

I. Deactivation - ZWCAD



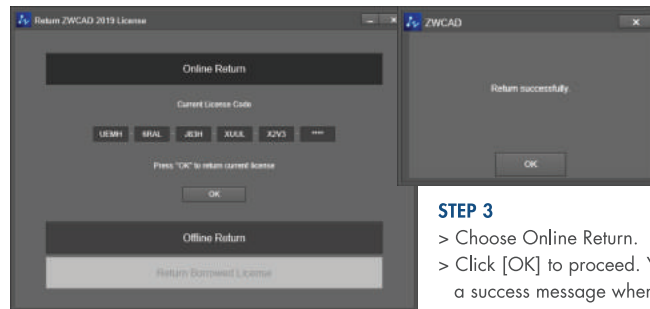
STEP 1

Launch **License Manager** from Windows Start Menu.



STEP 2

Click [Return License].



STEP 3

> Choose Online Return.
> Click [OK] to proceed. You'll see a success message when done.

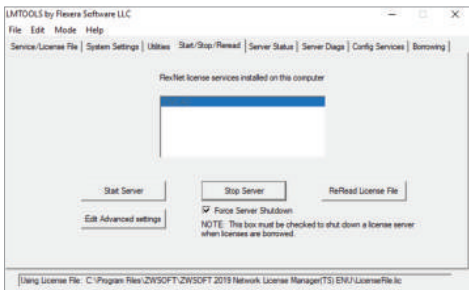


The deactivation should be processed with Internet access. If the Internet access is limited, please choose Offline Return then follow the guide to deactivate.

II. Deactivation – Network License Manager



STEP 1
Launch the **Network License Configuration** from Windows Start Menu.

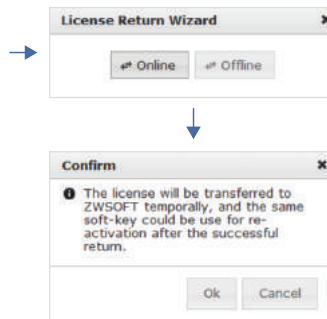
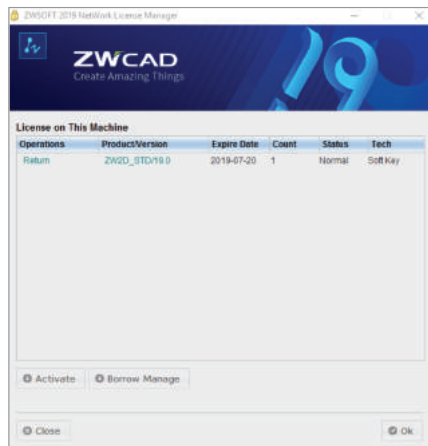


STEP 2
> Go to the tab **Start/Stop/Reread**.
> Check **Force Server Shutdown**.
> Click [Stop Server].

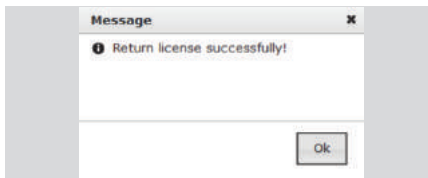


STEP 3
Launch the **Network License Manager** from Windows Start Menu.

II. Deactivation – Network License Manager



STEP 4
> Click [Return], then click [Online].
> Click [OK] to proceed.



STEP 5
You'll see a success message when done.



The deactivation should be processed with Internet access. If the Internet access is limited, please choose the Offline way then follow the guide to deactivate.

If you want to learn more about Installation and Activation, please launch ZWCAD then press F1 or input Help to open the Help system.

You can find the Installation and Registration Guide from the menu on the left side, or visit:

www.zwsoft.com/zwcad/online-help/installation-and-activation/

